

# The CreteFx<sup>®</sup> Concrete Coating Systems

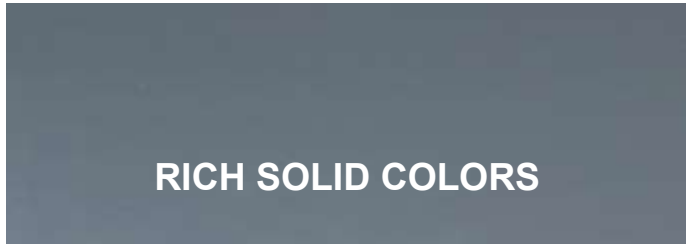
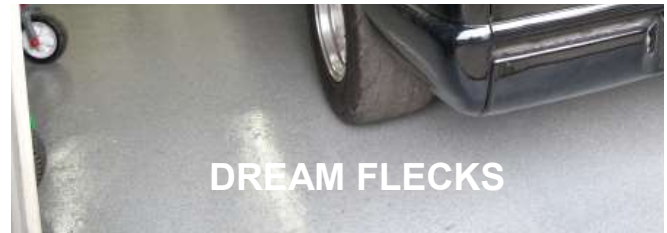
---

*Taking the Bore out of Concrete Floors*



HAWK RESEARCH LABORATORIES, LLC.  
High Performance Coating Systems

# **FIVE CRETEFX® DESIGN STYLES TO TRANSFORM CONCRETE SURFACES**



# CreteFx® High-Performance Professional Concrete Coatings

- VIRTUALLY ODORLESS AND LOW VOC
- EXTREMELY SCRATCH, CHEMICAL, AND WEAR RESISTANT
- EXTENDED COATING LIFESPAN, WITH UV RESISTANT ADDITIVE INCLUDED
- ALSO AVAILABLE WITH OPTIONAL STERLION™ ANTIMICROBIAL ADDITIVE\*
- SUITABLE FOR A VARIETY OF APPLICATION TECHNIQUES
- RETURNED-TO-SERVICE IN AS LITTLE AS TWO DAYS
- MINIMAL MAINTENANCE

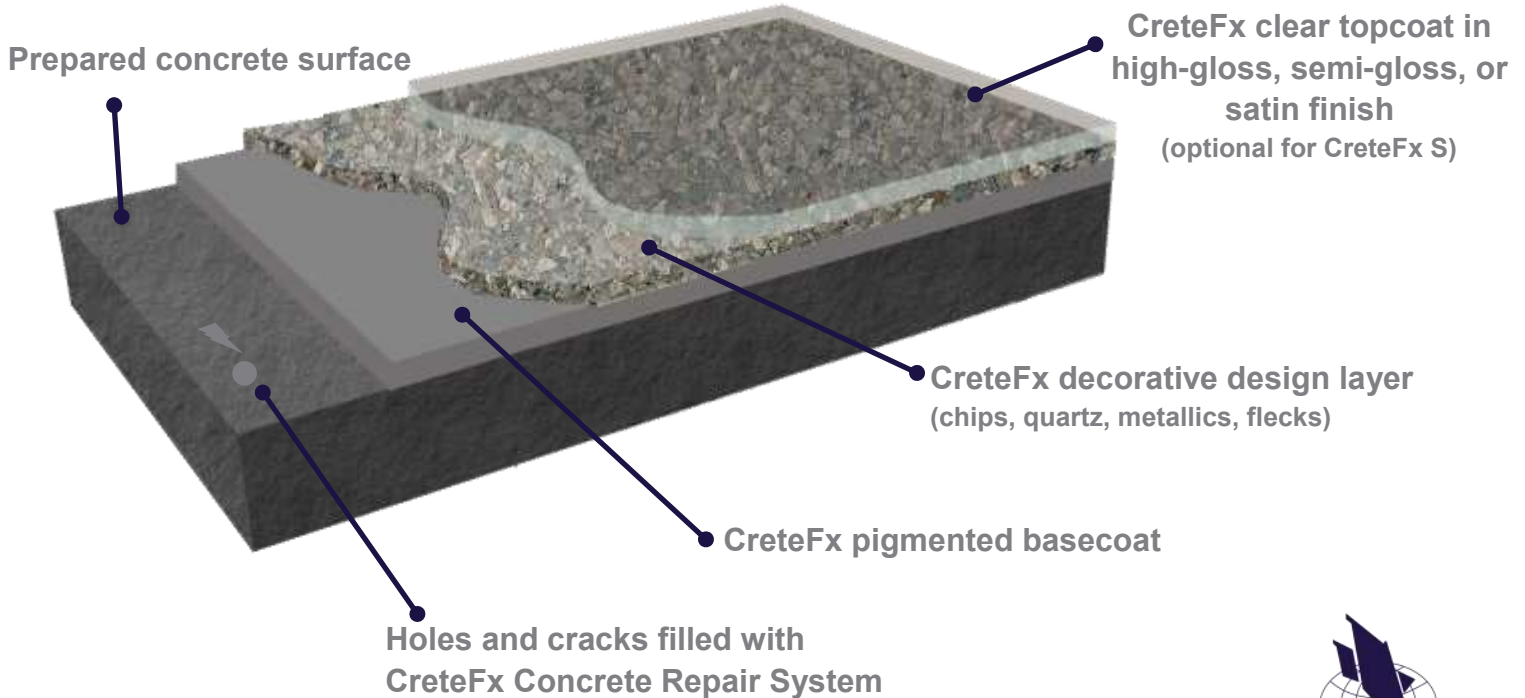
CreteFx WB Black Basecoat System, CreteFx S with Dream Metallics™ Wine Red, Tropical Orange, and Venetian Bronze.

\* Sterlion silver ion antimicrobial technology protects the surface from the harmful effects of bacteria



CreteFx® WB Black Basecoat System, CreteFx S with Dream Metallics™ Sapphire Blue, Ocean Blue, White Pearl and Silver Pearl.

# The CreteFx® Concrete Resurfacing System





# METALLIC DESIGNS

CreteFx<sup>®</sup> WB Basecoat System in Black, CreteFx S with Dream Metallics<sup>™</sup> Venetian Bronze, Hazelnut Brown, and Copper Kettle.

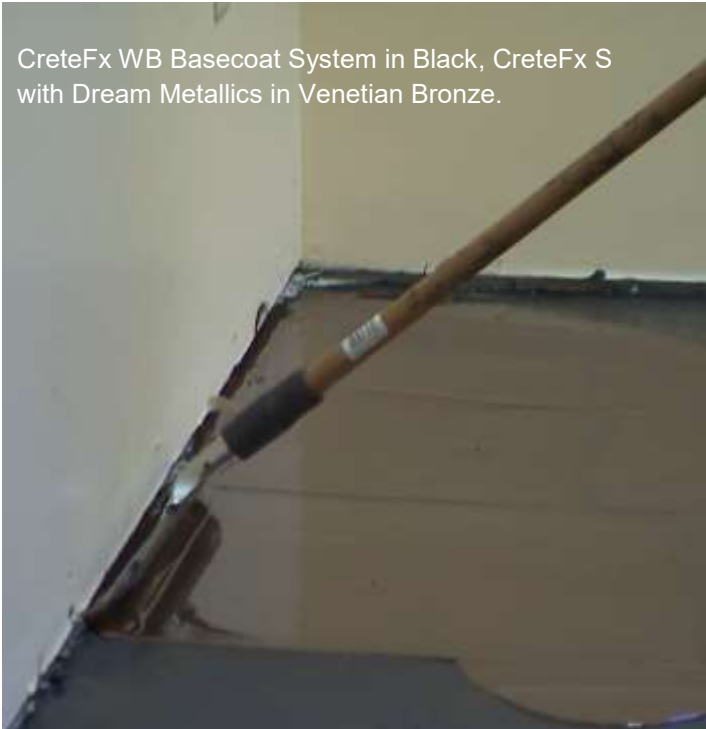
# CRETEFX® S METALLIC EPOXY

This durable two component, high-gloss clear metallic coating is designed to pair perfectly with the Dream Metallics Studio™ metallic pigments.

Create the look of natural stone, or add dramatic flair with a more multi-color artistic design. With nearly endless color combinations and application techniques, the only limit is your imagination.

## Typical Properties at 70° with 50% Relative Humidity

Dry Times	Recoat: 12 hours Foot Traffic: 24 hours Vehicular Traffic: 48 hours
Return to Full Service	48-72 hours
Pot Life	40 minutes
Coverage	65-100 ft <sup>2</sup> @ 16-24 mils dry film thickness
Sizes	Quarts, Gallons, 2-Gallon Kit, Garage Kit
Colors	Clear, White
VOC	Low Odor, Zero VOC
Pencil Hardness	3H (ASTM D3363)
Mix Ratio	1:1
Special Characteristics	<ul style="list-style-type: none"><li>• UV additive for extended coating life</li><li>• Optional anti-microbial additive available to protect the surface from bacteria</li></ul>



CreteFx WB Basecoat System in Black, CreteFx S with Dream Metallics in Venetian Bronze.

# DREAM METALLICS™ PIGMENTS

Choose from more than 30 deep and rich Dream Metallics pigments to create shimmering, pearlescent and iridescent effects. These pigments are designed to be field-blended into any of Hawk's topcoat systems, and can be applied using all of today's popular techniques. Available in four powder formats: Mica Metallic, Pearlescent, Sparkle Effects, and Special Effects.



Sizes	10, 50, and 450 gram containers
VOC	Zero
Recommended Add Ratio	25 grams per mixed gal



Dream Metallics Mica Metallics in Copper Kettle



# DREAM METALLICS™ PIGMENTS

The rich metallic mica powders offer deep colors that apply beautifully using spraying, rolling, pouring or brushing techniques. Available in 10, 50, and 450 grams packaging.

## Metallic Mica Powders



**Wine Red**



**Scarlet Red**



**Ocean Blue**



**Sapphire Blue**



**Apple Green**



**Carnation Pink**



**Lilac Purple**



**Royal Purple**



**Magenta**



**Hazelnut Brown**



**Venetian Bronze**



**Copper Kettle**



**Orange Gold**



**Gunmetal Gray**



**Black Gray**



**Canary Yellow<sup>1</sup>**



**Tropical Orange<sup>1</sup>**

Note: All Dream Metallics products are sold by gram weight. Due to the variance in density of certain colors, some packaging may appear more full than others.

Hawk recommends a black basecoat for most pigment colors.

<sup>1</sup> White basecoat recommended.

# DREAM METALLICS™ PIGMENTS

## Pearlescent Powders



White Pearl



Green Pearl



Blue Pearl



Violet Pearl



Silver Pearl



Gold Pearl



Pink Pearl

## Sparkle Effects Powders



Pink Sparkle



Purple Sparkle



Bronze Sparkle



Light Blue Sparkle



Dark Blue Sparkle

## Special Effects Powders<sup>1</sup>



Fluorescent  
Yellow<sup>1</sup>



Fluorescent  
Green<sup>1</sup>



Fluorescent  
Orange<sup>1</sup>



Fluorescent  
Purple<sup>1</sup>



Fluorescent  
Pink<sup>1</sup>



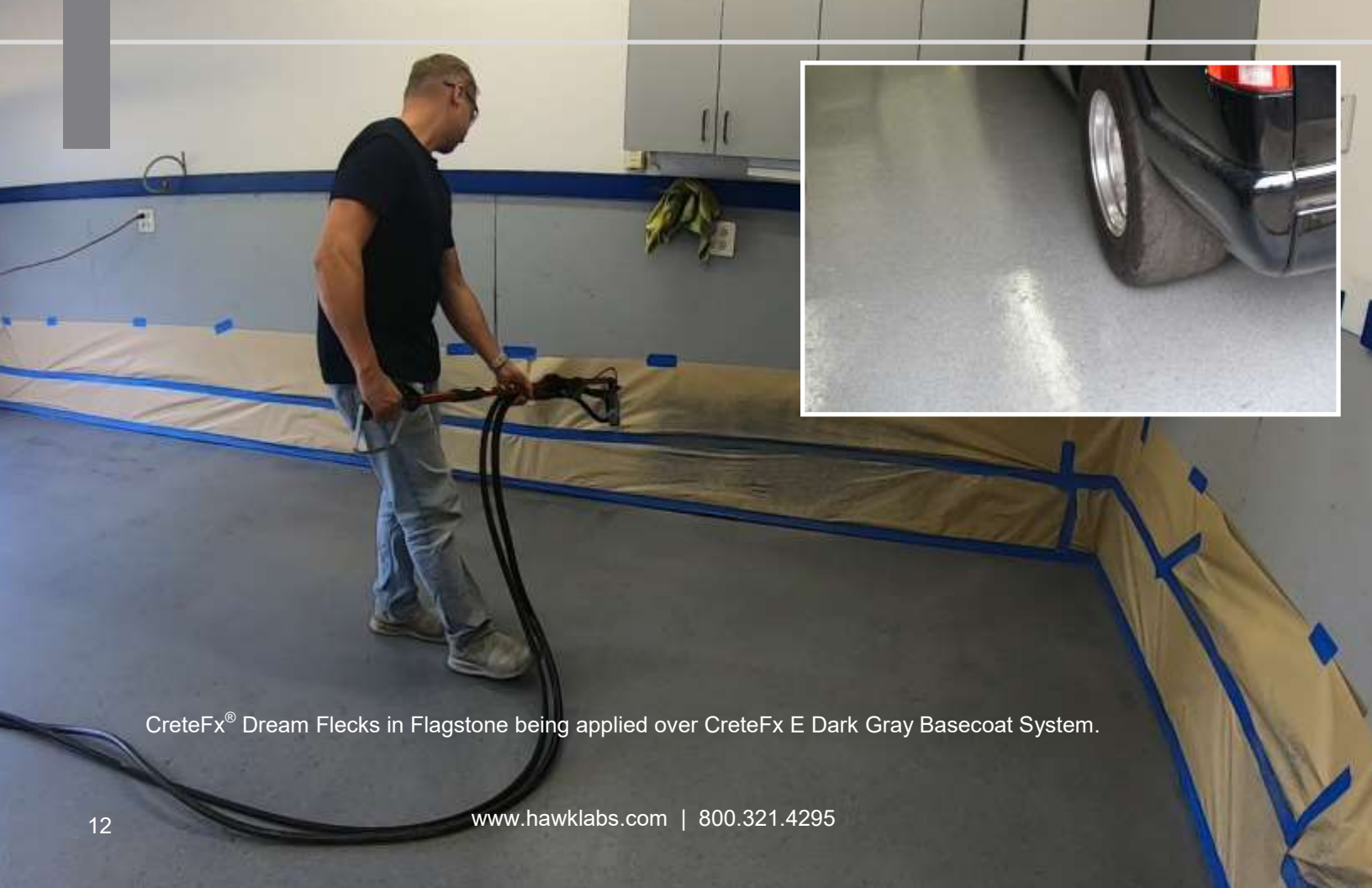
Fluorescent  
Blue<sup>1</sup>

Final colors and pattern may vary due to application technique, basecoat color, environmental conditions, the surfaces being treated, differences in computer monitors, and other elements which may cause differences from the samples presented. All colors are representative only.



# **CRETEFX® DREAM FLECKS**

CreteFx Dream Flecks in Sandalwood



CreteFx® Dream Flecks in Flagstone being applied over CreteFx E Dark Gray Basecoat System.

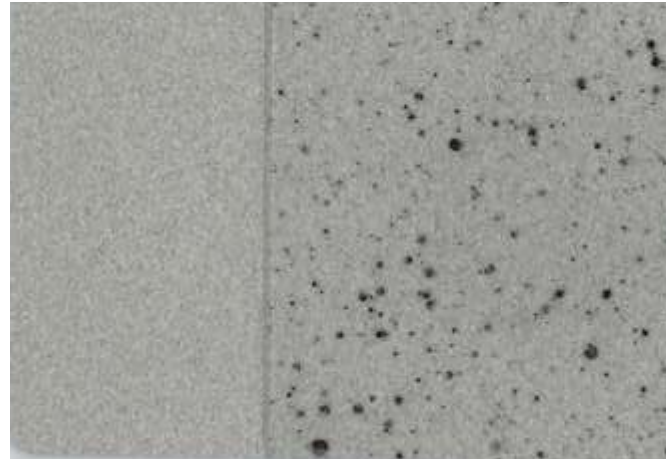
# CRETEFX® DREAM FLECKS

CreteFx Dream Flecks can be spray-applied over any CreteFx basecoat system to create the look of natural stone. There are 11 CreteFx Dream Fleck designs available, including larger flecks that mimic traditional stone or smaller fleck options that reflect a contemporary industrial chic look.

BOULDER COLLECTION		PEBBLE COLLECTION		Typical Properties at 70° with 50% Relative Humidity	
				System	Two-part, water-based multi-color flecks
SANDALWOOD	WHITE OPAL	BRONZITE	MOON ROCK	Mix Ratio	8:1 with CreteFx Dream Flecks Hardener
				Application	Spray
SMOKY QUARTZ	GYP SUM	JASPER	IRON ORE	Shelf Life	1 year with proper storage
				Coverage	120-150 sq. ft. per mixed gallon
SODALITE	FLAG STONE	LODESTONE	LODESTONE	Sizes	Mixed Gallon Kits
				VOC	Low Odor, Low VOC (~57 g/l)
				Design Options	6 larger particle flecks and 5 smaller particle flecks

# DREAM METALLICS™ METALLIC FLECKS

Add a touch of glamour to any CreteFx® Dream Flecks application. Spray any of these six classic metallic flecks over the CreteFx Dream Flecks multi-color finish for a one-of-a-kind look. Dream Metallics Metallic Flecks are available in convenient pint and gallon sizes.



# DREAM CHIPS

CreteFx® Dream Chips in Storm over CreteFx E  
Dark Gray Basecoat System.

# CreteFx® Dream Chips

Add traction and multi-color definition with CreteFx Dream Chips. These chips embed beautifully into CreteFx E or CreteFx P Basecoat Systems, and help hide surface imperfections. Encapsulate and protect the chips with the extremely durable and chemical resistant CreteFx E, CreteFx P, or CreteFx Fusion Topcoat Systems.



**Aquatic**



**Arctic Shore**



**Angelite**



**Coastal**



**Dalmatian**



**Denim**



**Gingerbread**



**Khaki**



**Lakeshore**



**Storm**



**Titanium**



**Treehouse**

System	1/4" color blend vinyl chips
Application	Broadcast
Shelf Life	Unlimited
Sizes	50 lbs.
VOC	No Odor, No VOC
Finish Options	12 in stock and 120+ special order blends*

\* Additional lead time required





**CreteFx® Dream Chips in Cabin Fever (special order) over CreteFx E Beige Basecoat System, and CreteFx P Topcoat System.**

# DREAM QUARTZ

CreteFx® Dream Quartz in Ultramarine (background) and Plum with White Ice (inset) covered in CreteFx P Topcoat System.



# CreteFx® Dream Quartz

For high traffic or wet areas where added traction is required, CreteFx Dream Quartz may be the right choice for you. The quartz particles broadcast easily into CreteFx E , CreteFx P or CreteFx MoistureShield Basecoat Systems and help hide surface imperfections. Extend the life of the coating by adding the extremely durable and chemical resistant CreteFx E, CreteFx P, or CreteFx Fusion Topcoat Systems.

System	40 mesh rounded quartz particles
Application	Broadcast
Shelf Life	Unlimited
Sizes	50 lbs.
VOC	No Odor, No VOC
Finish Options	12 in stock and 20+ additional special order blends *



\* Additional lead time required



**CreteFx® Dream Quartz in Plum and White Ice over CreteFx E Basecoat System and CreteFx Fusion Topcoat System.**

A close-up photograph of a roller being used to apply a dark gray basecoat to a concrete floor. The roller is positioned in the lower-left foreground, and the dark gray material is being spread across the floor surface. The background shows a concrete wall and a doorway.

# **RICH SOLID COLORS**

CreteFx<sup>®</sup> E Basecoat System in Dark Gray.

# CRETEFX® E EPOXY BASECOAT AND TOPCOAT

Backed by more than 40 years of coatings expertise, the high gloss CreteFx E basecoat and topcoat systems are high-performance coatings designed to withstand the rigors of high-traffic areas and tough garage chemicals.



## Typical Properties at 70° with 50% Relative Humidity

Dry Times	Recoat: 12 hours Foot Traffic: 24 hours Vehicular Traffic: 48 hours
Return to Full Service	48-72 hours
Pot Life	40 minutes
Coverage	250 ft <sup>2</sup> @ 6 mils dry film thickness
Sizes	Quarts, Gallons, 2-Gallon Kit, Garage System
Colors	Clear and 5 colors
VOC	Low Odor, Zero VOC
Pencil Hardness	3H (ASTM D3363)
Abrasion Resistance	55 mg after 1000 cycles (ASTM D4060)
Chemical Resistance	Excellent
Adhesion Pull Off, PSI	300—no coating failure (ASTM D4541)
Mix Ratio	2:1
Special Characteristics	UV additive for extended coating life

# CRETEFX® P POLYASPARTIC BASECOAT AND TOPCOAT

Backed by more than 40 years of coatings expertise, the fast-drying, high gloss, UV resistant CreteFx P Basecoat System is a professional-grade coating designed to withstand the rigors of high-traffic areas and tough garage chemicals.

## Typical Properties at 70° with 50% Relative Humidity

Dry Times	Recoat: 2 hours Foot Traffic: 2 hours
Return to Full Service	24-48 hours
Pot Life	40 minutes
Coverage	250 ft <sup>2</sup> @ 6 mils dry film thickness
Sizes	Quarts, Gallons, 2-Gallon Kit, Garage System
Colors	Clear and 5 colors
VOC	Low Odor, <35 g/l VOC
Pencil Hardness	2H (ASTM D3363)
Abrasion Resistance	56 mg after 1000 cycles (ASTM D4060)
Chemical Resistance	Excellent
Adhesion Pull Off, PSI	325—no coating failure (ASTM D4541)
Mix Ratio	1:1
Special Characteristics	FDA Compliant (21 CFR 175.300) Smoke & flame spread resistant (ANSI/UL 723)



# CRETEFX® MOISTURESHIELD™ EPOXY BASECOAT

Where moisture is a concern, the CreteFx MoistureShield basecoat system helps to control pH issues and moisture vapor transmission of up to 25 pounds per 1,000 ft<sup>2</sup> per 24 hours.

This basecoat is intended for use in combination with the CreteFx E, CreteFx P, and CreteFx Fusion Topcoat Systems, without adding time to the curing process.



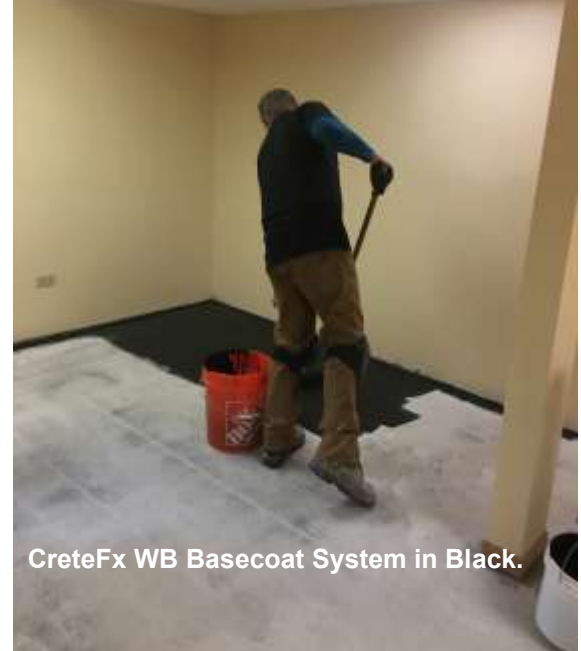
Typical Properties at 70° with 50% Relative Humidity	
Dry Times	Recoat: 12 hours Foot Traffic: 24 hours Vehicular Traffic: 48 hours
Return to Full Service	48-72 hours
Pot Life	40 minutes
Coverage	133 ft <sup>2</sup> @ 12 mils dry film thickness
Sizes	Quarts, Gallons, 2-Gallon Kit
Colors	Clear and 5 colors
VOC	Low Odor, Zero VOC
Adhesion	5A, 5B (ASTM D3359-09)
Mix Ratio	2:1



# CRETEFX® WB WATER-BASED EPOXY BASECOAT

The high gloss CreteFx WB basecoat system provides the adhesion, hide, and durability of a high performance epoxy in an easy-to-clean up, virtually odorless water-based formula.

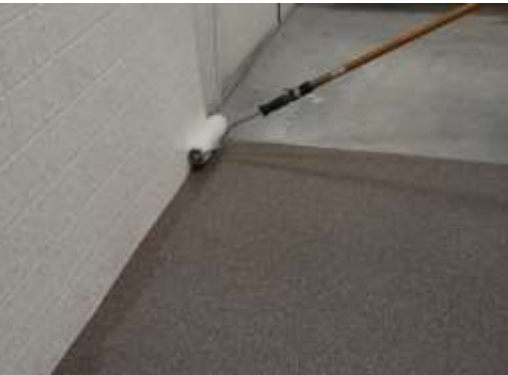
Typical Properties at 70° with 50% Relative Humidity	
Dry Time	Recoat: 30-40 minutes
Return to Full Service	24-48 hours
Pot Life	<4 hours
Coverage	230 ft <sup>2</sup> @ 3 mils dry film thickness
Sizes	Quarts, Gallons, 2-Gallon Kit, Garage System
Colors	White, Black
VOC	Virtually Odorless, <25 VOC
Adhesion	5A, 5B (ASTM D3359-09)
Mix Ratio	1:1, reduce with water as needed



CreteFx WB Basecoat System in Black.

# CRETEFX® FUSION CLEAR TOPCOAT

The CreteFx Fusion clear topcoat system provides a supremely durable added layer of protection, with the benefit of UV resistance, and it's available in three gloss level options.



Typical Properties at 70° with 50% Relative Humidity	
Dry Times	Recoat: 2 hours Foot Traffic: 24 hours Vehicular Traffic: 24-48 hours
Return to Full Service	24-48 hours
Pot Life	20 - 30 minutes
Coverage	225 ft <sup>2</sup> per mixed gallon @ 6 mils
Sizes	Quarts, Gallons
Gloss Levels	Clear Satin, Semi-Gloss, and Gloss
VOC	<100 g/l
Pencil Hardness	4H
Chemical Resistance	Excellent
Mix Ratio	2:1 with CreteFx Fusion Hardener; reduce with up to 5% GlasTech® 9000 Reducer if needed
Special Characteristics	UV resistant

A man in a blue polo shirt and safety glasses is standing in a garage, looking at a finished floor. The floor is a light gray color with a speckled texture. The garage has white walls and a white door. The ceiling is white with exposed pipes and a red fire alarm pull station.

# GARAGE SYSTEMS

CreteFx® E Medium Gray Basecoat System, topped with CreteFx Dream Chips in Titanium, and CreteFx P Topcoat System.

# CRETEFX® BUILD-YOUR-OWN GARAGE SYSTEMS

Choose a CreteFx coating system based on the features most important to the project, and we'll help you calculate the amount of product required.

System	Coats	Return to Full Service <sup>1</sup>	Return to Service After Topcoat	Cost	UV Resistance Color Stability	Gloss	Performance
CreteFx E	Epoxy basecoat & topcoat	72 hours	Light Foot Traffic (24 hrs) Vehicular Traffic (48 hrs)	\$	Good	High-Gloss	<ul style="list-style-type: none"> <li>• Low odor &amp; low VOC</li> <li>• Resistant to scratches and wear<sup>2</sup></li> <li>• Excellent adhesion<sup>3</sup></li> <li>• Highly resistant to motor oil, anti-freeze, transmission fluid, gas, brake fluid, salt water and hot tire pick-up</li> <li>• Hides dirt, grime</li> </ul>
CreteFx P	Polyaspartic basecoat & topcoat	24 hours	Light Foot Traffic (2 hrs) Vehicular Traffic (24 hrs)	\$\$\$	Best	High-Gloss	
CreteFx WB	Water-based epoxy basecoat	24-72 hours based on topcoat choice	Light Foot Traffic (2-24 hrs) Vehicular Traffic (24-48 hrs) <i>(depending on topcoat)</i>	\$\$\$	Good	Gloss	
CreteFx MoistureShield	Epoxy basecoat	72 hours	Light Foot Traffic (24 hrs) Vehicular Traffic (48 hrs)	\$\$\$	Good	Gloss	
CreteFx Fusion	Clear proprietary topcoat formulation	24 hours	Light Foot Traffic (2 hrs) Vehicular Traffic (24 hrs)	\$\$	Best	Gloss, Semi-Gloss & Satin	
CreteFx S	Metallic decorative coat	72 hours	Light Foot Traffic (24 hrs) Vehicular Traffic (48 hrs)	\$\$\$\$	Good	High-Gloss	

# CRETEFX® GARAGE SYSTEMS—POPULAR COMBINATIONS

Below are some of our most popular basecoat and topcoat combinations.

## The fastest system

- CreteFx P Basecoat
- CreteFx P Topcoat

## The lowest cost system

- CreteFx E Basecoat
- CreteFx E Topcoat

## The best system for floors with moisture

- CreteFx MoistureShield Basecoat
- CreteFx Fusion Topcoat

## The most overall benefits

For faster drying, good UV resistance, ease-of-use and a variety of sheen options at a more affordable price point

- CreteFx E Basecoat
- CreteFx Fusion Topcoat

## The best system for cooler application conditions

- CreteFx P Basecoat
- CreteFx Fusion Topcoat

## The recommended system for metallic designs

- CreteFx WB Basecoat
- CreteFx S Decorative Coat

(For a satin, semi-gloss, or high-gloss UV-resistant finish, add CreteFx Fusion)



**CreteFx® E Medium Gray Basecoat System, CreteFx Dream Chips in Titanium, and CreteFx P Topcoat System.**



# ADDITIONAL SUPPLIES & EQUIPMENT

CreteFx® Concrete Repair System

# CRETEFX® CONCRETE REPAIR SYSTEM

Mixing fine grit sand (available in your local hardware store) with the CreteFx® Concrete Repair System creates a fast and effective solution for filling in holes and cracks. In approximately two hours, repaired areas will be dry and ready for grinding.



CreteFx Concrete Repair System

## Typical Properties at 70° with 50% Relative Humidity

Cure Time	1 hour
Pot Life	30 minutes
Coverage	250 ft <sup>2</sup> @ 5 mils dry film thickness
Sizes	Quarts
Colors	Clear
VOC	Low Odor, <35 g/l VOC
Pencil Hardness	2H (ASTM D3363)
Abrasion Resistance	56 mg after 1000 cycles (ASTM D4060)
Chemical Resistance	Excellent
Adhesion Pull Off, PSI	325—no coating failure (ASTM D4541)
Mix Ratio	1:1
Special Characteristics	FDA Compliant (21 CFR 175.300) Smoke & flame spread resistant (ANSI/UL 723)



## CRETEFX® CLEANER

Easily clean up drips, splatters, and tools with the professional quality CreteFx Cleaner. This powerful cleaner is specifically designed for use with CreteFx products.



CRETEFX CLEANER

## ISOPROPYL ALCOHOL 99%

Disperse metallic coating cells or mix with Dream Metallics™ Metallic Powders to add dimension and layers to a metallic floor.



CreteFx® WB Black Basecoat topped with CreteFx S Metallic System mixed with Dream Metallics Powders in Black Gray, and Isopropyl Alcohol mixed separately with Dream Metallics Powders in Apple Green, Gold Pearl, Ocean Blue, White Pearl, and Copper Kettle.

## DISPOSABLE SUPPLIES

As a convenience to its customers, Hawk stocks a variety of disposable supplies. Save a trip to the hardware store, simply add these items to your next order.



# CONCRETE PREPARATION EQUIPMENT AND ACCESSORIES

As an authorized distributor for Substrate Technologies, Inc., Hawk can provide the equipment you need to adequately prepare concrete before coating.



**IMPACT AMERICAS  
S210E SHOTBLASTER**



**PREP/MASTER®  
3003AR DUST COLLECTOR**



**U.S. SAWS  
TC-7 STAND-UP EDGER**



**U.S. SAWS  
VSG-10 GRINDER**



**PREP/MASTER® JR.  
CONCRETE GRINDER**



**GRINDING  
SUPPLIES & ACCESSORIES**



**SHOT BLASTING  
SUPPLIES & ACCESSORIES**

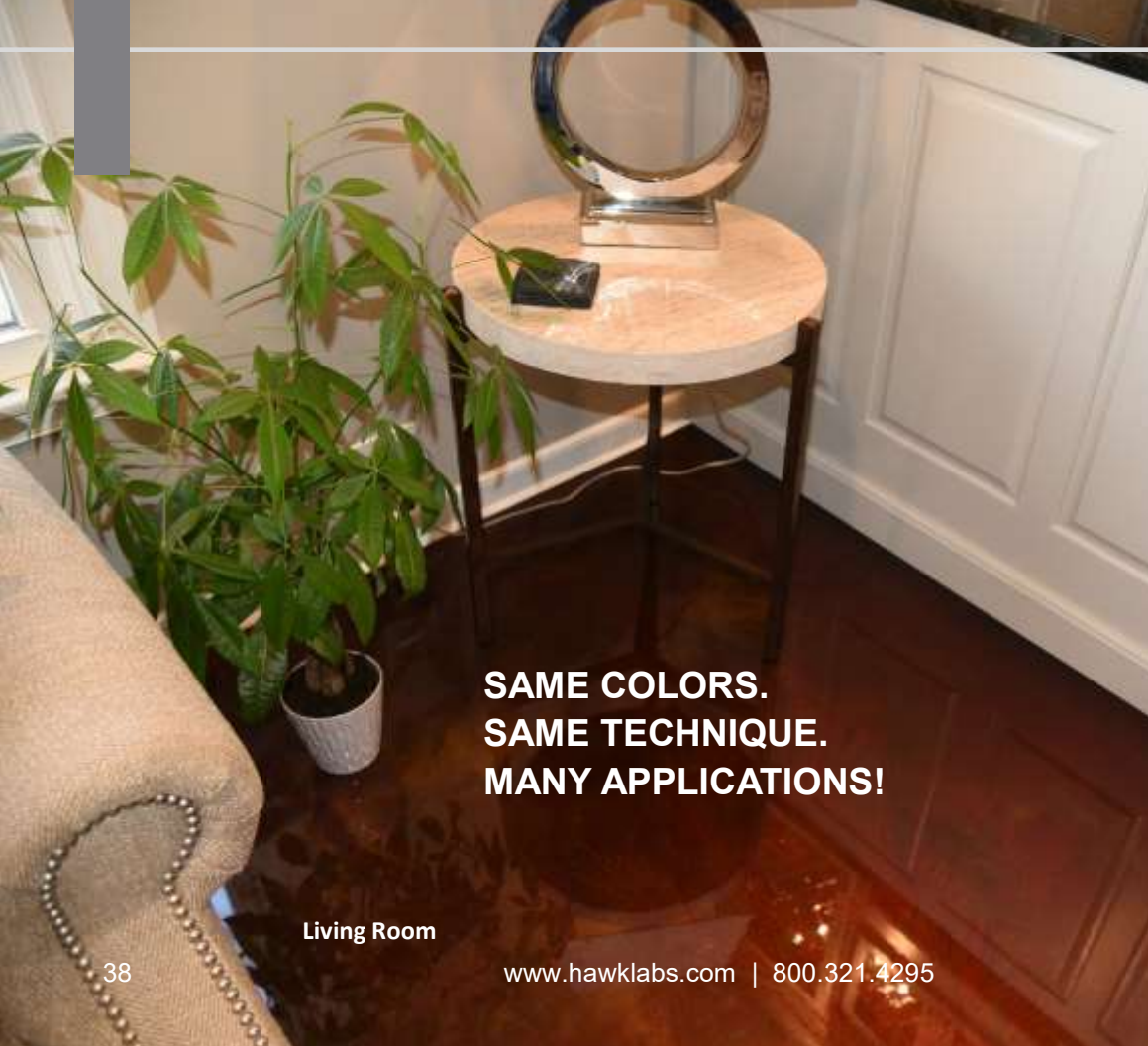




Prep/Master 3003 Dust Collector and Impact Americas S210E Shot Blaster.

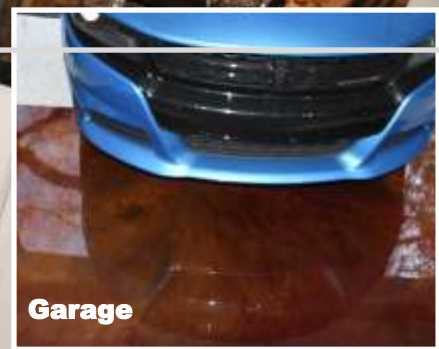
## **VERSATILITY AND ENDLESS POSSIBILITIES**

- Virtually odorless products can be applied in open or odor-sensitive areas
- Applies beautifully using an array of today's application techniques
- Virtually unlimited color combinations that work across a variety of applications
- Five decorative finish options to support a wide range of design styles
- The flexibility of multiple cure time options
- A variety of price points ranging from economical to premium



**SAME COLORS.  
SAME TECHNIQUE.  
MANY APPLICATIONS!**

Living Room



Garage



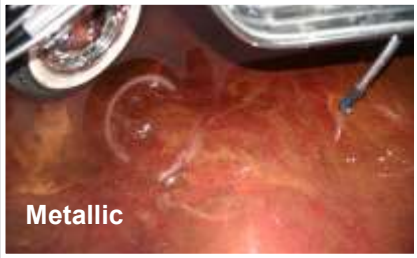
Showroom



Workshop



Quartz



Metallic



Multi-Color Flecks

**SAME APPLICATION.  
VIRTUALLY UNLIMITED COLORS.  
ENDLESS DESIGN OPTIONS!**

**Decorative Vinyl Chip**

## Disclaimers

- 1) All monitors and printers vary and may display colors differently. Due to chemical composition, thickness, application methods, basecoat color and job site conditions, individual colors may vary. Sample colors pictured in this brochure are close approximations but should not be used for specification purposes. For best color selection, contact Hawk Research Laboratories to obtain chip samples.
- 2) All Dream Metallics powders are sold by weight. Due to the variance in density of certain colors, some packaging may appear more full than others.
- 3) Return-to-Full-Service time is calculated from start of basecoat application. Drying times vary based on preferred CreteFx system and conditions.
- 4) All ASTM testing was performed in an indoor laboratory under controlled conditions.

## About Hawk Research Laboratories

Hawk is the recognized industry leading manufacturer of professional resurfacing systems used in residential, commercial, and industrial applications worldwide. We develop high performance premium products with attractive colors and designs and enhanced functionality. These systems are a cost-effective alternative to renovation. For more information, visit [www.hawklabs.com](http://www.hawklabs.com) or call 800.321.HAWK (4295).

Hawk Research Labs

[www.hawklabs.com](http://www.hawklabs.com)

800-321-4295

[sales@hawklabs.com](mailto:sales@hawklabs.com)



**HAWK RESEARCH LABORATORIES, LLC.**  
High Performance Coating Systems